



**Hazel Wolf K-8**  
PARENT TEACHER STUDENT ASSOCIATION

# Direct Appeal Campaign

**MARCH 5-20, 2023**

## YOUR GUIDE TO PARTICIPATION

### WHY DONATE?

1. Enhance learning for our children through support for teachers and tutors
2. Advance equity & create an inclusive community
3. Provide Resources for families to support a strong foundation of learning

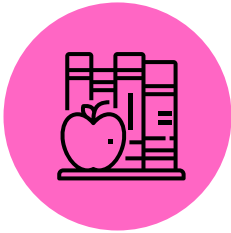
### HOW MUCH?

In honor of Hazel Wolf's 125<sup>th</sup> birthday, and to reach our goal, we are asking for \$125 per student -OR- \$10.50 per month.

**Every donation counts. No donation is too small!**

## WHAT YOUR FINANCIAL GIFT SUPPORTS\*

**SCHOOL & STAFF GRANTS**  
\$50,000



Classroom supplies, Books, Subscriptions & Enrichment opportunities

**COMMUNITY EVENTS**  
\$10,000



Building community in and out of school with events like the spelling bee, check & connect, multicultural night, and more

**RACIAL EQUITY & INCLUSION**  
\$5,000



Interpretations & translations, Racial equity trainings, Student affinity groups

**TUTORING**  
\$20,000



Support for tutors to reach students most in need and to close the opportunity gap

\*Top funding allocations in the 2022-23 budget.

### OUR MISSION

Hazel Wolf K-8 PTSA works to enhance the learning experience for every child - in a way that fosters whole child well being and success.

### HOW ARE FUNDING CHOICES MADE?

Every school year, the PTSA Board creates a budget based on a mission, the year's goals and community input from families and HW staff. The budget is presented at the fall general session meeting and approved by the PTSA membership.

### 2 EASY WAYS TO DONATE



**Online:** [hazelwolfk8.org/2023-direct-appeal-campaign](https://hazelwolfk8.org/2023-direct-appeal-campaign)

**Mail:** Send a check payable to Hazel Wolf K-8 PTSA to 11530 12th Ave. NE, Seattle, WA 98125

### THANK YOU SPONSORS!

